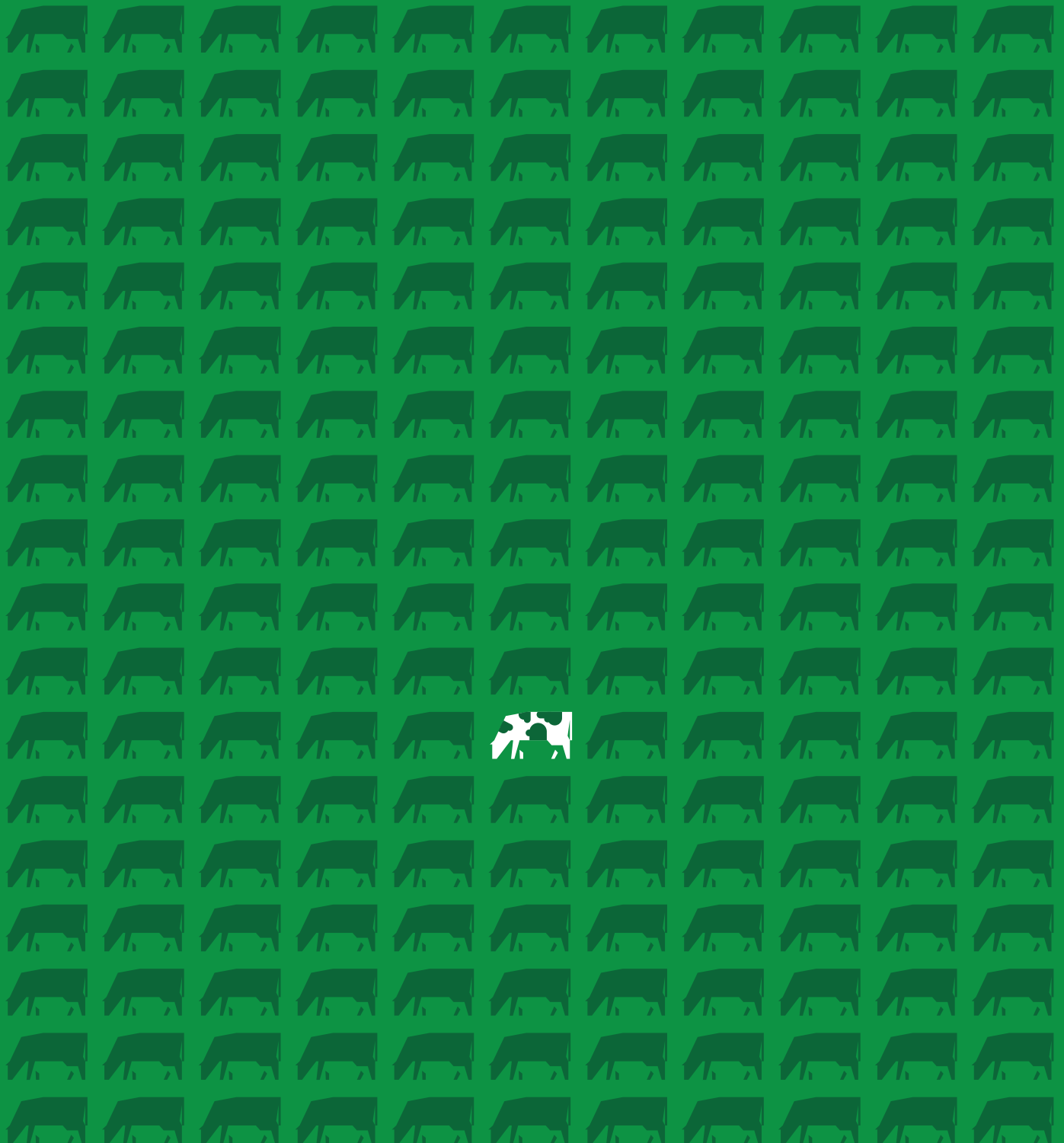


Dairy Sires GB

Spring 2025





Edward Webb
Business Development
Manager EMEA
Email: ewebb@irelandgenetics.com
Mob: +44 7375 384710
Tel: (046) 954-1333
Ireland Genetics, Naas,
Co.Kildare, Ireland.
www.irelandgenetics.com

Genus Breeding Ltd
Alpha Building, London Road,
Nantwich, Cheshire CW5 7JW
01270 616681
cs@genusbreeding.co.uk

www.absglobal.com/uk



INTRODUCTION

Ireland Genetics (Farmer Co-op owned), together with their shareholders Munster Bovine and Progressive Genetics operate the largest grass based genomic dairy breeding programme in the world.

Being the first Artificial Insemination organisation established in the late 1940's, they have over 70 years of experience in cattle breeding and are also responsible for 98% of Milk recording services in Ireland.

In Ireland, all animal records including identification, ancestry, performance, slaughter and genomic data, is stored in the national cattle breeding database (ICBF).

Through Industry wide collaborations and consistent engagement in science and technology based research, we are continually developing and identifying the most profitable genetics for your particular farming system. (IG) Ireland Genetics is committed to bringing superior Irish beef and dairy genetics to the global farming community.

Our Product

Superior Genetics

A tailored genetic offering to meet your farming system objectives:

- A range of Sires, intensively selected using EBI, from our breeding programme which incorporates the highest performing herds in Ireland.
- Our own innovative data driven system designed to easily identify the right genetic product for your herd.
- Sire evaluations that are externally calculated by ICBF (National Evaluation Centre) and subsequent phenotypic farm performance that is validated by Teagasc (National Farm Research Centre).

Exceptional Semen Quality

- Our semen product is produced and processed in our own central laboratory whose processes undergo internal and external auditing in compliance with ISO 9001:2015 quality standards.
- Semen quality is maintained by continually adhering to best practices during the manufacturing process; This is proven to consistently deliver the highest possible conception rates.
- All bulls undergo our unique 'Field fertility' test programme prior to commercialisation and sexing. Bulls are assessed for suitability to enter conventional, fresh or sexed programs.

A Dedicated Team

- That strives to understand your market and its specific needs to guide and advise you on using the right 'Ireland Genetics' product to match your breeding objectives and maximise farm profitability.

Profitable, fertile cows that live longer.

THE 'IRELAND GENETICS' SYSTEM

Genetics Tailored to your Farming System Objectives

- Our own innovative bull selection system designed to easily identify the right EBI genetic product for your herd.

Using EBI, we segment our bulls into 4 different categories based on your system of production to ensure that the sires you select will meet your future performance objectives and maximise your farm profitability.

We help you to select for cows that meet your system needs rather than you having to change your system to meet your cows needs.

- Using EBI and our system of selection, our genetics will deliver;
 - A herd of cows with a consistent average live weight.
 - Cows that will calve every 365 days.
 - Cows that can produce milk aligned with your production objectives and optimise your 'milk payment system'
 - Healthier 'trouble free' easier managed cows.
 - Longer lasting cows meaning more profitable cows
 - A higher lifetime production (more lactations and a higher average output per lactation)
 - Lower replacement rates
 - The perfect balance between dairy efficiency and beef supply chain sustainability.
 - More sustainable and carbon efficient cows; lower emissions and less water requirements

SYSTEM OBJECTIVES				
	System 1	System 2	System 3	System 4
Avg. Mature Lactation (Litres)	4500	6000	7500	9000+
Fat & Prot (kg)	500kgs	550kgs	600kgs	-
Avg Cow Weight (kg)	500kgs	550kgs	600kgs	700kgs+
Calving Interval (days)	365	365	365	410
No. of Lactations	5+	5+	5+	-
Description	Focuses on milk solid production per hectare with limited supplementation per cow.	Optimise milk solid production per cow Produced mainly from grazed forage with strategic supplementation. Optimize Cull Cow & Dairy BeefCalf Value"	Optimise milk production with a balance between solids and volume Produced from forage (grazed and ensiled) with moderate supplementation. Optimize Cull Cow & Dairy BeefCalf Value"	Maximise milk volume produced per cow through maximising feed intake per cow through driving high dry matter intakes.

* Avg. Mature Lactation (Litres): 3+ Lactations

BULL INDEX AND SUMMARY

AI Code	Name	Semen	Pedigree	System	Proof	EBI	EBI Rel%	Milk SI	Fert SI
JE7164	(IG) SUIRHERO AMATO		XSR	1	DP	273	82	102	123
JEX281	(IG) ZENTA	Sexed	XSR	1	GS	297	56	108	117
FR7170	(IG) COOLNASOON ALAMO		XSR	1	DP	304	85	112	135
FRX134	(IG) LEADES ENDURANCE	Sexed	SRM	1	GS	331	68	108	135
FR5022	(ABS) CHERRYHILL COLIN	Sexed	PED	1&2	DP	256	78	77	104
FR7167	(IG) MUINEMOR HUBER		XSR	1&2	DP	274	84	75	137
FR6960	(IG) BALLINROE XAAR	Sexed	PED	1&2	DP	301	86	79	140
FR8637	(IG) SHANTULLIG REUBEN	Sexed	SRM	1&2	GS	319	64	101	140
FR8466	(IG) DERRYMELEEN EXUDE	Sexed	SRM	1&2	GS	351	68	113	148
FR4337	(IG) GABRIEL ZORO	Sexed	SRM	2	DP	226	97	99	88
FR5971	(IG) VIADUCTVIEW FIVEO	Sexed	PED	2	DP	228	91	78	104
	(ABS) CHERRYHILL BEN	Sexed	PED	2	GS	231	64	59	128
FR5803	(IG) HIGHMOUNT STARK		PED	2	DP	258	93	103	87
FR4482	(IG) SPRINGHAVEN SUPREME		PED	2	DP	258	96	91	117
FR4600	(IG) CLORANE DANDYMAN		PED	2	DP	281	97	96	105
FR6433	(IG) STAMULLEN MOZART	Sexed	SRM	2	DP	290	86	77	171
FR6844	(IG) HILLTOWN FABLE		SRM	2	DP	296	86	110	121
FR7926	(IG) STAMULLEN ZAKERY	Sexed	SRM	2	GS	305	70	91	143
FR6547	(IG) STAMULLEN LUNASA	Sexed	SRM	2	DP	306	85	70	144
FR7047	(IG) BAURAVILLA PISTOL	Sexed	SRM	2	DP	320	88	104	154
FR8811	(IG) BALLYDUNNE REDSIMBA	Sexed	SRM	2	GS	327	65	97	150
FR9016	(IG) TINNAKILL GRANDSLAM	Sexed	PED	2	GS	339	66	121	126
FR9361	(IG) BARNLAND FLATELY	Sexed	SRM	2&3	GS	304	67	96	134
	(ABS) CHERRYHILL HAMILTON	Sexed	PED	3	GS	246	64	102	105
FR4728	(IG) KILFEACLE PIVOTAL		PED	3	DP	271	96	124	98
FR8139	(IG) MALLARDSTOWN ROOSTER	Sexed	PED	3	GS	272	69	92	118
FR7992	(ABS) CHERRYHILL EDMOND	Sexed	PED	3	GS	284	68	72	150
FR6649	(IG) KILFEACLE DANZIG		PED	3	DP	285	86	95	138
FR6778	(IG) KILBALLY SUGARHILL		SRM	3	DP	297	86	112	129
FR7356	(IG) GARRYNAGREE NEILLY	Sexed	SRM	3	DP	305	78	107	140
	(ABS) CHERRYHILL SCHUMACHER	Sexed	PED	3	GS	308	64	114	155
FR9316	(IG) DUNGRANGE DAN	Sexed	PED	3	GS	313	67	121	130
FR7929	(IG) TANKARDSROCK TEAK	Sexed	PED	3	GS	345	72	107	150
FR1185	(IG) KILLAVALLA LINESMAN	Sexed	PED	3	GS	347	59	137	144

BULL INDEX AND SUMMARY

Carbon SI	Calv SI	Beef SI	Maint SI	Mgnt SI	Health SI	Milk Kg	Solids Kg	Fat %	Prot %	Gest (Days)	HFR Calv
18	54	-60	22	6	8	-120	28	0.42	0.23	-5	Low
17	29	-24	29	6	15	-108	28	0.39	0.25	-3	Mod
15	54	-23	17	-2	-4	-33	29	0.30	0.25	-5	Low
17	44	-21	30	5	13	94	32	0.25	0.18	-4	Low
9	51	-21	19	13	3	-10	23	0.27	0.14	-4	Low
12	46	-14	7	8	3	-28	21	0.24	0.15	-4	Low
15	49	-13	20	5	7	96	23	0.16	0.12	-5	Low
17	40	-11	21	1	9	-103	26	0.35	0.24	-4	Low
11	52	-20	21	6	20	75	35	0.35	0.17	-4	Low
4	38	-16	6	4	3	-45	23	0.22	0.24	-5	Mod
4	42	-8	5	4	-2	-60	25	0.38	0.14	-4	Low
15	33	-17	11	4	-2	-24	16	0.19	0.12	-4	Mod
0	47	-9	15	2	14	127	31	0.21	0.16	-5	Low
4	45	-15	6	-3	13	50	26	0.22	0.16	-4	Low
5	53	-9	17	0	14	129	27	0.13	0.16	-5	Low
15	33	-3	6	-1	-8	-73	19	0.25	0.19	-3	Low
7	67	-35	15	5	6	18	29	0.25	0.23	-7	Low
14	49	-16	19	1	4	-31	25	0.29	0.19	-4	Low
20	47	0	18	-1	8	-94	17	0.23	0.18	-5	High
10	40	0	7	2	3	6	30	0.33	0.19	-3	Low
12	59	-19	14	5	10	83	29	0.24	0.15	-6	Low
12	61	-12	21	-1	11	49	33	0.28	0.23	-6	Low
8	47	-25	18	3	22	111	30	0.25	0.13	-4	Low
4	52	-23	13	5	-12	125	27	0.12	0.18	-5	Mod
-7	54	-3	4	5	-3	222	39	0.22	0.16	-5	Low
7	54	-10	9	2	1	61	25	0.18	0.17	-5	Low
6	37	1	7	3	7	74	21	0.14	0.12	-3	Low
3	56	-10	3	8	-8	182	27	0.09	0.14	-5	Low
-2	55	-7	4	0	7	143	36	0.29	0.14	-5	Low
6	37	-8	10	2	10	63	28	0.21	0.21	-3	Low
6	34	-1	7	-7	0	45	33	0.29	0.21	-3	Mod
-1	53	-17	7	4	17	211	40	0.29	0.13	-4	Low
1	48	-10	9	4	36	197	34	0.21	0.12	-4	Low
1	46	-8	5	5	17	111	40	0.33	0.22	-4	Mod

(IG) SUIRHERO AMATO XSR

IRL Code: JE7164

AI Code: J2854



Daughter of M.Grandsire - (IG) Longview Reliable

HB No 372225236621545 **Sire** PUKETAWA AD SUPERSTITION
DOB 03/02/2020
Breed JE (50%),HO (44%),FR (6%) **Dam** IE341547890914
Beta A2/A2 **MG Sire** (IG) LONGVIEW RELIABLE
Kappa AB
Colour **Bred by** Joseph Gerard Tobin, Cashel, Tipperary
System 1

DAM YIELDS	Milk Kgs	Fat Kgs	Ptn		Bfat		Calv Int
			Kgs	F&P Kgs	%	Ptn %	
6 Lact	8676	284	306	590	3.27	3.53	374
Average	7874	318	283	601	4.06	3.59	368
Life (7 Lct)	55487	2247	1988	4235	4.05	3.58	

EBI & SUB-INDEXES

Index	€	Rel%	0	50	100
EBI	273	82			
Milk	102	96			
Fertility	123	63			
Carbon	18	83			
Calving	54	97			
Beef	-60	80			
Maintenance	22	81			
Management	6	66			
Health	8	78			

Daughter Proven, ICBF Nov 2024

PRODUCTION

Milk (kg)	-120		
Fat (kg)	19		
Protein (kg)	9	% Rel	96
Fat %	0.42		
Protein %	0.23		

FERTILITY

Calving Int (Days)	-7.0	% Rel	62
Survival %	2.8	% Rel	67

MANAGEMENT

Temperament	0.09	Average
Milking Time	-9.4	Average



CALVING

Dairy Heifer Calving Diff	5.3	% Rel	96
Dairy Cow Calving Diff	2.5	% Rel	96
Gest. Length (Days)	-5.0	% Rel	99
Calf Mort	-0.1	% Rel	99

BEEF

Carcass Wt	-19	kg
Carcass Conf	-1.1	

HEALTH

Lameness %	0.0	Average
SCC	-0.1	Good
Mastitis %	-0.04	Good
TB %	7.81	Average
Liver Fluke %	32.0	Good

(IG) ZENTA XSR

IRL Code: JEX281

AI Code: HO8116



Dam of (IG) Zenta

HB No 372215254380930 **Sire** BARRACKHILL REUBEN
DOB 19/02/2023
Breed HO (44%),JE (31%),FR (25%) **Dam** 372215254320124
Beta A2/A2 **MG Sire** OKURA LT INTEGRITY
Kappa AB
Colour Black Carrier **Bred by** Thomas McEvoy, Ballyragget, Kilkenny
System 1

DAM YIELDS	Milk Kgs	Fat Kgs	Ptn		Bfat		Calv Int
			Kgs	F&P Kgs	%	Ptn %	
2 Lact	6074	318	238	556	5.24	3.92	329
Average	7045	392	279	671	5.49	3.96	368
Life (3 Lct)	21136	1177	837	2014	5.57	3.96	

EBI & SUB-INDEXES

Index	€	Rel%	0	50	100
EBI	297	56			
Milk	108	77			
Fertility	117	32			
Carbon	17	55			
Calving	29	58			
Beef	-24	47			
Maintenance	29	39			
Management	6	54			
Health	15	67			

Genomic, ICBF Nov 2024

PRODUCTION

Milk (kg)	-108		
Fat (kg)	18		
Protein (kg)	10	% Rel	77
Fat %	0.39		
Protein %	0.25		

FERTILITY

Calving Int (Days)	-6.6	% Rel	34
Survival %	2.7	% Rel	26

MANAGEMENT

Temperament	0.04	Average
Milking Time	-14.6	Fast



CALVING

Dairy Heifer Calving Diff	6.8	% Rel	61
Dairy Cow Calving Diff	2.9	% Rel	64
Gest. Length (Days)	-2.7	% Rel	60
Calf Mort	0.1	% Rel	60

BEEF

Carcass Wt	-11	kg
Carcass Conf	-0.7	

HEALTH

Lameness %	-0.02	Average
SCC	-0.06	Average
Mastitis %	-0.05	Good
TB %	5.72	Good
Liver Fluke %	32.2	Good

(IG) COOLNASOON ALAMO XSR

IRL Code: FR7170

AI Code: HO7398



Daughter of P.Grandsire - (IG) Longview Reliable

HB No 372219081613902 **Sire** (IG) KILFEACLE PIVOTAL
DOB 31/01/2020
Breed HO (63%),JE (25%),FR (13%) **Dam** IE141827882338
Beta A2/A2 **MG Sire** PUKEROA TGM MANZELLO
Kappa BB
Colour **Bred by** Michael Murphy, Macroom, Cork
System 1

	Milk Kgs	Fat Kgs	Ptn Kgs	F&P Kgs	BFat %	Ptn %	Calv Int
4 Lact	5412	304	235	539	5.62	4.33	354
Average	5799	278	244	522	4.79	4.21	363
Life (5 Lct)	23196	1111	977	2088	4.79	4.21	

EBI & SUB-INDEXES

Index	€	Rel%	0	50	100
EBI	304	85			
Milk	112	97			
Fertility	135	66			
Carbon	15	86			
Calving	54	97			
Beef	-23	91			
Maintenance	17	86			
Management	-2	65			
Health	-4	78			

Daughter Proven, ICBF Nov 2024

PRODUCTION

Milk (kg)	-33		
Fat (kg)	16		
Protein (kg)	13	% Rel	97
Fat %	0.30		
Protein %	0.25		

FERTILITY

Calving Int (Days)	-7.5	% Rel	64
Survival %	3.3	% Rel	71

MANAGEMENT

Temperament	-0.09	Average
Milking Time	-4.6	Average



CALVING

Dairy Heifer Calving Diff	5.5	% Rel	94
Dairy Cow Calving Diff	2.4	% Rel	97
Gest. Length (Days)	-4.5	% Rel	99
Calf Mort	-0.2	% Rel	99

BEEF

Carcass Wt	-11	kg
Carcass Conf	-0.8	

HEALTH

Lameness %	-0.07	Good
SCC	-0.05	Average
Mastitis %	-0.03	Good
TB %	11.93	Below Avg
Liver Fluke %	32.5	Average

(IG) LEADES ENDURANCE SRM

IRL Code: FRX134

AI Code: HO7397



Dam of (IG) Leades Endurance

HB No 372212818991961 **Sire** (IG) HIGHMOUNT STARK
DOB 08/03/2021
Breed HO (66%),FR (22%),JE (13%) **Dam** IE141814061277
Beta A2/A2 **MG Sire** BALLYBRIDE BOSTON
Kappa AA
Colour Black & White **Bred by** James Cotter, Coachford, Cork
System 1

	Milk Kgs	Fat Kgs	Ptn Kgs	F&P Kgs	BFat %	Ptn %	Calv Int
5 Lact	8424	419	300	719	4.97	3.56	339
Average	7335	335	261	596	4.55	3.56	366
Life (5 Lct)	36674	1674	1306	2980	4.56	3.56	

EBI & SUB-INDEXES

Index	€	Rel%	0	50	100
EBI	331	68			
Milk	108	82			
Fertility	135	42			
Carbon	17	66			
Calving	44	91			
Beef	-21	66			
Maintenance	30	53			
Management	5	60			
Health	13	75			

Genomic, ICBF Nov 2024

PRODUCTION

Milk (kg)	94		
Fat (kg)	18		
Protein (kg)	13	% Rel	82
Fat %	0.25		
Protein %	0.18		

FERTILITY

Calving Int (Days)	-7.0	% Rel	43
Survival %	3.8	% Rel	38

MANAGEMENT

Temperament	-0.02	Average
Milking Time	-17.4	Fast



CALVING

Dairy Heifer Calving Diff	5.5	% Rel	88
Dairy Cow Calving Diff	2.4	% Rel	90
Gest. Length (Days)	-4.0	% Rel	97
Calf Mort	0.7	% Rel	97

BEEF

Carcass Wt	-12	kg
Carcass Conf	-0.5	

HEALTH

Lameness %	-0.04	Good
SCC	-0.07	Average
Mastitis %	-0.04	Good
TB %	6.77	Good
Liver Fluke %	32.3	Average

(ABS) CHERRYHILL COLIN PED

IRL Code: FR5022

AI Code: HO5656



(ABS) Cherryhill Colin

HB No 372218169192019 **Sire** HAGGARD FRANKO
DOB 12/08/2018
Breed HO (81%),FR (19%) **Dam** CHERRYHILL LHZ PEACE
Beta A2/A2 **MG Sire** (IG) LAURAGH EVERT
Kappa BB
Colour **Bred by** Donald Thomas Scully,
System 1&2 Portlaoise, Laois

	Milk Kgs	Fat Kgs	Ptn Kgs	F&P Kgs	BFat %	Ptn %	Calv Int
4 Lact	5838	302	246	548	5.17	4.22	353
Average	5285	264	208	472	4.93	3.87	644
Life (5 Lct)	26423	1321	1042	2363	5	3.94	

EBI & SUB-INDEXES

Index	€	Rel%	0	50	100
EBI	256	78			
Milk	77	94			
Fertility	104	58			
Carbon	9	78			
Calving	51	83			
Beef	-21	82			
Maintenance	19	64			
Management	13	65			
Health	3	81			

PRODUCTION

Milk (kg)	-10		
Fat (kg)	15		
Protein (kg)	8	% Rel	94
Fat %	0.27		
Protein %	0.14		

FERTILITY

Calving Int (Days)	-5.1	% Rel	59
Survival %	3.2	% Rel	54

MANAGEMENT

Temperament	0.24	Good
Milking Time	-15.6	Fast



Daughter Proven, ICBF Nov 2024

CALVING

Dairy Heifer Calving Diff	5.1	% Rel	74
Dairy Cow Calving Diff	2.1	% Rel	85
Gest. Length (Days)	-3.9	% Rel	89
Calf Mort	-0.3	% Rel	89

BEEF

Carcass Wt	-7	kg
Carcass Conf	-0.6	

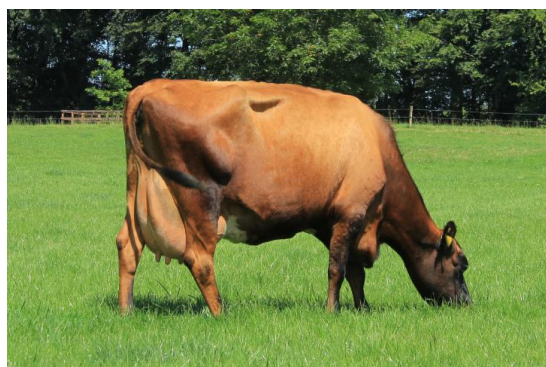
HEALTH

Lameness %	-0.06	Good
SCC	-0.03	Average
Mastitis %	-0.04	Good
TB %	9.44	Below Avg
Liver Fluke %	31.6	Good

(IG) MUINEMOR HUBER XSR

IRL Code: FR7167

AI Code: HO7197



Dam of IG Muinemor Huber

HB No 372223058745308 **Sire** COOLEWEST THADY SRM
DOB 13/02/2020
Breed HO (56%),FR (25%),JE (19%) **Dam** IE221087293107
Beta A2/A2 **MG Sire** VAN STRAALENS HARRIER-ET
Kappa AA
Colour **Bred by** James Dwyer, Portlaoise, Laois
System 1&2

	Milk Kgs	Fat Kgs	Ptn Kgs	F&P Kgs	BFat %	Ptn %	Calv Int
9 Lact	4016	248	172	420	6.18	4.28	352
Average	4740	260	192	452	5.55	4.06	367
Life (11 Lct)	52839	2954	2130	5084	5.59	4.03	

EBI & SUB-INDEXES

Index	€	Rel%	0	50	100
EBI	274	84			
Milk	75	97			
Fertility	137	65			
Carbon	12	86			
Calving	46	96			
Beef	-14	89			
Maintenance	7	85			
Management	8	64			
Health	3	77			

PRODUCTION

Milk (kg)	-28		
Fat (kg)	13		
Protein (kg)	8	% Rel	97
Fat %	0.24		
Protein %	0.15		

FERTILITY

Calving Int (Days)	-8.8	% Rel	63
Survival %	2.1	% Rel	69

MANAGEMENT

Temperament	0.15	Good
Milking Time	-9.8	Average



Daughter Proven, ICBF Nov 2024

CALVING

Dairy Heifer Calving Diff	5.5	% Rel	92
Dairy Cow Calving Diff	2.6	% Rel	96
Gest. Length (Days)	-4.0	% Rel	99
Calf Mort	-0.6	% Rel	99

BEEF

Carcass Wt	-7	kg
Carcass Conf	-0.8	

HEALTH

Lameness %	-0.01	Average
SCC	-0.03	Average
Mastitis %	-0.02	Good
TB %	7.89	Average
Liver Fluke %	32.8	Below Avg

(IG) BALLINROE XAAR PED

IRL Code: FR6960

AI Code: HO6810



Dam of (IG) Ballinroe Xaar

HB No	372219429792415	Sire	(IG) KILFEACLE PIVOTAL
DOB	16/02/2020		
Breed	HO (63%),FR (34%),UN (3%)	Dam	BALLINROE PBM BUNTY 1507
Beta	A2/A2	MG Sire	(IG) BALLINABORTA PRIMO
Kappa	AB		
Colour		Bred by	Thomas Collier, Thurles, Tipperary
System	1&2		

	Milk Kgs	Fat Kgs	Ptn Kgs	F&P Kgs	BFat %	Ptn %	Calv Int
9 Lact	4990	218	188	406	4.37	3.77	337
Average	5476	267	214	481	4.89	3.91	362
Life (9 Lct)	43809	2138	1708	3846	4.88	3.9	

EBI & SUB-INDEXES

Index	€	Rel%	0	50	100
EBI	301	86			
Milk	79	97			
Fertility	140	69			
Carbon	15	88			
Calving	49	98			
Beef	-13	94			
Maintenance	20	86			
Management	5	66			
Health	7	80			

Daughter Proven, ICBF Nov 2024

PRODUCTION

Milk (kg)	96		
Fat (kg)	13		
Protein (kg)	10	% Rel	97
Fat %	0.16		
Protein %	0.12		

FERTILITY

Calving Int (Days)	-9.3	% Rel	67
Survival %	1.9	% Rel	75

MANAGEMENT

Temperament	-0.02	Average	
Milking Time	-18.0	Fast	

CALVING

Dairy Heifer Calving Diff	6.1	% Rel	98
Dairy Cow Calving Diff	2.6	% Rel	99
Gest. Length (Days)	-5.0	% Rel	99
Calf Mort	0.5	% Rel	99

BEEF

Carcass Wt	-8	kg	
Carcass Conf	-0.3		

HEALTH

Lameness %	0.01	Average	
SCC	-0.11	Good	
Mastitis %	-0.02	Good	
TB %	7.37	Good	
Liver Fluke %	32.7	Average	



(IG) SHANTULLIG REUBEN SRM

IRL Code: FR8637

AI Code: HO8120



Dam of M.Grandsire - (IG) Modeligo Luke

HB No	372212237871732	Sire	(IG)SKEHANAGH DEANO
DOB	16/02/2022		
Breed	HO (78%),FR (22%)	Dam	SHANTULLIG SUSAN FR 2079
Beta	A2/A2	MG Sire	(IG) MODELIGO LUKE
Kappa	BB		
Colour	Black	Bred by	John Moynihan, Bantry, Cork
System	1&2		

	Milk Kgs	Fat Kgs	Ptn Kgs	F&P Kgs	BFat %	Ptn %	Calv Int
5 Lact	7511	333	299	632	4.43	3.98	360
Average	6530	310	259	569	4.76	3.97	354
Life (5 Lct)	33631	1575	1337	2912	4.68	3.98	

EBI & SUB-INDEXES

Index	€	Rel%	0	50	100
EBI	319	64			
Milk	101	81			
Fertility	140	38			
Carbon	17	61			
Calving	40	95			
Beef	-11	54			
Maintenance	21	41			
Management	1	59			
Health	9	73			

Genomic, ICBF Nov 2024

PRODUCTION

Milk (kg)	-103		
Fat (kg)	16		
Protein (kg)	10	% Rel	81
Fat %	0.35		
Protein %	0.24		

FERTILITY

Calving Int (Days)	-7.3	% Rel	40
Survival %	3.9	% Rel	33

MANAGEMENT

Temperament	-0.05	Average	
Milking Time	-9.4	Average	

CALVING

Dairy Heifer Calving Diff	6.8	% Rel	88
Dairy Cow Calving Diff	2.6	% Rel	94
Gest. Length (Days)	-4.1	% Rel	99
Calf Mort	0.0	% Rel	99

BEEF

Carcass Wt	-8	kg	
Carcass Conf	-0.5		

HEALTH

Lameness %	-0.06	Good	
SCC	-0.07	Average	
Mastitis %	-0.09	Good	
TB %	9.49	Below Avg	
Liver Fluke %	31.9	Good	



(IG) DERRYMELEEN EXUDE SRM

IRL Code: FR8466

AI Code: HO8121



Dam of (IG) Derrymeleen Exude SRM

HB No	372216751514919	Sire	(IG) KILFEACLE PIVOTAL
DOB	16/02/2021		
Breed	HO (66%),FR (28%),JE (6%)	Dam	DERRYMELEEN AVRIL/IE141459782793
Beta	A2/A2	MG Sire	BAGWORTH PF GRANDEUR S1F
Kappa	AA		
Colour	Red	Bred by	Thomas Garrett O'Neill, Ballineen, Cork
System	1&2		

	Milk Kgs	Fat Kgs	Ptn Kgs	F&P Kgs	BFat %	Ptn %	Calv Int
6 Lact	6482	309	250	559	4.77	3.86	346
Average	6037	305	240	545	5.06	3.96	367
Life (7 Lct)	42336	2107	1664	3771	4.98	3.93	

EBI & SUB-INDEXES

Index	€	Rel%	0	50	100
EBI	351	68			
Milk	113	82			
Fertility	148	47			
Carbon	11	65			
Calving	52	91			
Beef	-20	56			
Maintenance	21	47			
Management	6	61			
Health	20	77			

Genomic, ICBF Nov 2024

PRODUCTION

Milk (kg)	75		
Fat (kg)	23		
Protein (kg)	12	% Rel	82
Fat %	0.35		
Protein %	0.17		

FERTILITY

Calving Int (Days)	-8.5	% Rel	49
Survival %	3.4	% Rel	42

MANAGEMENT

Temperament	0.19	Good
Milking Time	3.5	Average

CALVING

Dairy Heifer Calving Diff	4.4	% Rel	76
Dairy Cow Calving Diff	1.9	% Rel	91
Gest. Length (Days)	-3.8	% Rel	97
Calf Mort	-0.6	% Rel	97

BEEF

Carcass Wt	-9	kg
Carcass Conf	-0.6	

HEALTH

Lameness %	-0.05	Good
SCC	-0.04	Average
Mastitis %	-0.07	Good
TB %	5.29	Good
Liver Fluke %	32.1	Good



(IG) GABRIEL ZORO SRM

IRL Code: FR4337

AI Code: HO6531



Dam of (IG) Gabriel Zoro

HB No	372216138190945	Sire	(IG) OLCASLETOWN RONALDO
DOB	16/02/2017		
Breed	HO (75%),FR (25%)	Dam	GABRIEL BUG SUSY
Beta	A1/A2	MG Sire	BUSY BROOK RASTUS-ET S3F
Kappa	AB		
Colour		Bred by	Donal McCarthy, Ballydehob, Cork
System	2		

	Milk Kgs	Fat Kgs	Ptn Kgs	F&P Kgs	BFat %	Ptn %	Calv Int
6 Lact	6044	275	235	510	4.55	3.88	363
Average	6027	280	233	512	4.63	4.595	367
Life (6 Lct)	36160	1678	1395	3073	4.64	3.86	

EBI & SUB-INDEXES

Index	€	Rel%	0	50	100
EBI	226	97			
Milk	99	99			
Fertility	88	96			
Carbon	4	98			
Calving	38	99			
Beef	-16	99			
Maintenance	6	99			
Management	4	72			
Health	3	97			

Daughter Proven, ICBF Nov 2024

PRODUCTION

Milk (kg)	-45		
Fat (kg)	11		
Protein (kg)	12	% Rel	99
Fat %	0.22		
Protein %	0.24		

FERTILITY

Calving Int (Days)	-4.4	% Rel	96
Survival %	2.7	% Rel	95

MANAGEMENT

Temperament	0.05	Average
Milking Time	-8.2	Average

CALVING

Dairy Heifer Calving Diff	7.9	% Rel	99
Dairy Cow Calving Diff	2.6	% Rel	99
Gest. Length (Days)	-4.6	% Rel	99
Calf Mort	-0.1	% Rel	99

BEEF

Carcass Wt	-8	kg
Carcass Conf	-0.4	

HEALTH

Lameness %	0.01	Average
SCC	-0.11	Good
Mastitis %	-0.03	Good
TB %	8.94	Average
Liver Fluke %	33.2	Below Avg



(IG) VIADUCTVIEW FIVEO PED

IRL Code: FR5971

AI Code: HO6675



Dam of (IG) Viaductview Fiveo

HB No 372214489762221 **Sire** (IG) BALLYGOWN ALBERT
DOB 09/02/2019
Breed HO (81%),FR (19%) **Dam** VIADUCTVIEW 2004 SNOWDROP
Beta A1/A2 **MG Sire** (IG) PARKDUF DAFFY
Kappa AB
Colour **Bred by** Donal McSweeney, Togher, Cork
System 2

DAM YIELDS	Milk Kgs	Fat Kgs	Ptn Kgs	F&P Kgs	BFat %	Ptn %	Calv Int
4 Lact	6232	337	237	574	5.41	3.8	356
Average	5801	307	211	518	5.36	3.62	361
Life (4 Lct)	23205	1228	843	2071	5.29	3.63	

EBI & SUB-INDEXES

Index	€	Rel%	0	50	100
EBI	228	91			
Milk	78	99			
Fertility	104	79			
Carbon	4	93			
Calving	42	99			
Beef	-8	99			
Maintenance	5	95			
Management	4	69			
Health	-2	88			

Daughter Proven, ICBF Nov 2024

PRODUCTION

Milk (kg)	-60		
Fat (kg)	19		
Protein (kg)	6	% Rel	99
Fat %	0.38		
Protein %	0.14		

FERTILITY

Calving Int (Days)	-5.8	% Rel	79
Survival %	2.5	% Rel	79

MANAGEMENT

Temperament	0.05	Average
Milking Time	-8.5	Average

CALVING

Dairy Heifer Calving Diff	7.4	% Rel	98
Dairy Cow Calving Diff	2.7	% Rel	99
Gest. Length (Days)	-4.1	% Rel	99
Calf Mort	0.3	% Rel	99

BEEF

Carcass Wt	-4	kg
Carcass Conf	-0.8	

HEALTH

Lameness %	0.01	Average
SCC	-0.11	Good
Mastitis %	-0.03	Good
TB %	10.23	Below Avg
Liver Fluke %	33.0	Below Avg



(ABS) CHERRYHILL BEN PED

IRL Code:

AI Code: HO7243



(ABS) Cherryhill Ben

HB No 372218169192373 **Sire** SCARTFLESK RONALD / FR4717
DOB 13/02/2020
Breed FR (21.88%),HO (78.13%) **Dam** CHERRYHILL PHC RUDY 1953 / 372218169191953
Beta A2/A2 **MG Sire** (IG) CURRIHEVERN RUDOLPH / PHC
Kappa AB
Colour **Bred by** Donald Thomas Scully, Portlaoise, Laois
System 2

DAM YIELDS	Milk Kgs	Fat Kgs	Ptn Kgs	F&P Kgs	BFat %	Ptn %	Calv Int
4 Lact	6078	248	229	477	4.09	3.77	387
Average	6451	278	242	520	4.32	3.75	369
Life (5 Lct)	32254	1388	1210	2598	4.3	3.75	

EBI & SUB-INDEXES

Index	€	Rel%	0	50	100
EBI	231	64			
Milk	59	82			
Fertility	128	46			
Carbon	15	62			
Calving	33	61			
Beef	-17	50			
Maintenance	11	46			
Management	4	62			
Health	-2	78			

Genomic, ICBF Nov 2024

PRODUCTION

Milk (kg)	-24		
Fat (kg)	10		
Protein (kg)	6	% Rel	
Fat %	0.19		
Protein %	0.12		

FERTILITY

Calving Int (Days)	-6.7	% Rel	48
Survival %	3.6	% Rel	41

MANAGEMENT

Temperament	0.07	Average
Milking Time	-3.3	Average

CALVING

Dairy Heifer Calving Diff	8.3	% Rel	68
Dairy Cow Calving Diff	3.0	% Rel	66
Gest. Length (Days)	-3.7	% Rel	61
Calf Mort	-0.7	% Rel	61

BEEF

Carcass Wt	-10	kg
Carcass Conf	-0.4	

HEALTH

Lameness %	0.01	Average
SCC	-0.03	Average
Mastitis %	0.0	Average
TB %	8.68	Average
Liver Fluke %	32.7	Average



(IG) HIGHMOUNT STARK PED

IRL Code: FR5803

AI Code: HO6540



Dam of (IG) Highmount Stark

HB No 372219799392209 **Sire** (IG) OLCASTLETOWN RONALDO
DOB 03/03/2019
Breed HO (75%),FR (22%),JE (3%) **Dam** HIGHMOUNT LHZ CATHERINE
Beta A2/A2 **MG Sire** (IG) LAURAGH EVERT
Kappa AA
Colour **Bred by** John Hannigan, Dromcollogher, Limerick
System 2

	Milk Kgs	Fat Kgs	Ptn Kgs	F&P Kgs	BFat %	Ptn %	Calv Int
4 Lact	7628	314	279	593	4.12	3.66	348
Average	7187	290	265	555	4.03	3.69	385
Life (5 Lct)	35934	1447	1325	2772	4.03	3.69	

EBI & SUB-INDEXES

Index	€	Rel%	0	50	100
EBI	258	93			
Milk	103	99			
Fertility	87	84			
Carbon	0	95			
Calving	47	99			
Beef	-9	99			
Maintenance	15	98			
Management	2	72			
Health	14	93			

Daughter Proven, ICBF Nov 2024

PRODUCTION

Milk (kg)	127		
Fat (kg)	17		
Protein (kg)	13	% Rel	99
Fat %	0.21		
Protein %	0.16		

FERTILITY

Calving Int (Days)	-3.5	% Rel	84
Survival %	3.5	% Rel	84

MANAGEMENT

Temperament	0.06	Average
Milking Time	2.1	Average

CALVING

Dairy Heifer Calving Diff	6.8	% Rel	99
Dairy Cow Calving Diff	2.8	% Rel	99
Gest. Length (Days)	-4.6	% Rel	99
Calf Mort	-0.3	% Rel	99

BEEF

Carcass Wt	-5	kg
Carcass Conf	-0.4	

HEALTH

Lameness %	0.01	Average
SCC	-0.17	Good
Mastitis %	-0.02	Good
TB %	6.17	Good
Liver Fluke %	32.8	Average



(IG) SPRINGHAVEN SUPREME PED

IRL Code: FR4482

AI Code: HO6542



Dam of (IG) Springhaven Supreme

HB No 372219543774689 **Sire** (IG) LONGVIEW RELIABLE
DOB 06/02/2017
Breed HO (72%),FR (28%) **Dam** SPRINGHAVEN YRC MELANIE 3859
Beta A2/A2 **MG Sire** CURRA ROY
Kappa AA
Colour **Bred by** Robert Troy Jnr, Charleville, Cork
System 2

	Milk Kgs	Fat Kgs	Ptn Kgs	F&P Kgs	BFat %	Ptn %	Calv Int
5 Lact	6521	297	257	554	4.56	3.94	373
Average	6158	273	233	505	4.19	3.6	386
Life (6 Lct)	36945	1636	1396	3032	4.43	3.78	

EBI & SUB-INDEXES

Index	€	Rel%	0	50	100
EBI	258	96			
Milk	91	99			
Fertility	117	94			
Carbon	4	98			
Calving	45	99			
Beef	-15	99			
Maintenance	6	99			
Management	-3	72			
Health	13	96			

Daughter Proven, ICBF Nov 2024

PRODUCTION

Milk (kg)	50		
Fat (kg)	15		
Protein (kg)	11	% Rel	99
Fat %	0.22		
Protein %	0.16		

FERTILITY

Calving Int (Days)	-5.1	% Rel	94
Survival %	4.2	% Rel	93

MANAGEMENT

Temperament	-0.24	Below Ave
Milking Time	-17.5	Fast

CALVING

Dairy Heifer Calving Diff	7.1	% Rel	99
Dairy Cow Calving Diff	2.7	% Rel	99
Gest. Length (Days)	-4.2	% Rel	99
Calf Mort	-0.6	% Rel	99

BEEF

Carcass Wt	-7	kg
Carcass Conf	-0.7	

HEALTH

Lameness %	-0.01	Average
SCC	-0.28	Good
Mastitis %	-0.09	Good
TB %	9.95	Below Avg
Liver Fluke %	33.0	Below Avg



(IG) CLORANE DANDYMAN PED

IRL Code: FR4600

AI Code: HO5500



Dam of (IG) Clorane Dandyman

HB No	IE241458532742	Sire	(IG) LONGVIEW RELIABLE
DOB	08/11/2016		
Breed	HO (75%),FR (25%)	Dam	CLORANE DEBBIE -60
Beta	A2/A2	MG Sire	(IG) BALLINABORTA PRIMO
Kappa	AB		
Colour		Bred by	Thomas Relihan, Port Adare, Limerick
System	2		

	Milk Kgs	Fat Kgs	Ptn Kgs	F&P Kgs	BFat %	Ptn %	Calv Int
2 Lact	9114	337	335	672	3.7	3.67	372
Average	11219	471	418	889	4.43	3.625	460
Life (5 Lct)	56094	2353	2091	4444	4.19	3.73	

EBI & SUB-INDEXES

Index	€	Rel%	0	50	100
EBI	281	97			
Milk	96	99			
Fertility	105	95			
Carbon	5	98			
Calving	53	99			
Beef	-9	99			
Maintenance	17	99			
Management	0	73			
Health	14	96			

Daughter Proven, ICBF Nov 2024

PRODUCTION

Milk (kg)	129		
Fat (kg)	13		
Protein (kg)	14	% Rel	99
Fat %	0.13		
Protein %	0.16		

FERTILITY

Calving Int (Days)	-5.2	% Rel	95
Survival %	3.2	% Rel	94

MANAGEMENT

Temperament	-0.18	Below Ave
Milking Time	-20.9	Fast

CALVING

Dairy Heifer Calving Diff	5.6	% Rel	99
Dairy Cow Calving Diff	2.2	% Rel	99
Gest. Length (Days)	-4.6	% Rel	99
Calf Mort	0.2	% Rel	99

BEEF

Carcass Wt	-6	kg
Carcass Conf	-0.4	

HEALTH

Lameness %	-0.01	Average
SCC	-0.26	Good
Mastitis %	-0.09	Good
TB %	9.32	Below Avg
Liver Fluke %	31.7	Good



(IG) STAMULLEN MOZART SRM

IRL Code: FR6433

AI Code: HO7394



Dam of (IG) Stamullen Mozart

HB No	372224757483297	Sire	IG OAKGLEN SCORPION
DOB	18/02/2020		
Breed	HO (78%),FR (22%)	Dam	STAMULLEN CATHRIONA B 2583
Beta	A1/A2	MG Sire	STAMULLEN D WHISTLER 2285
Kappa	AB		
Colour		Bred by	Brendan Meade, Stamullen, Meath
System	2		

	Milk Kgs	Fat Kgs	Ptn Kgs	F&P Kgs	BFat %	Ptn %	Calv Int
6 Lact	6521	324	252	576	4.97	3.86	384
Average	7459	342	292	634	4.58	3.92	365
Life (6 Lct)	43815	2035	1713	3748	4.64	3.91	

EBI & SUB-INDEXES

Index	€	Rel%	0	50	100
EBI	290	86			
Milk	77	97			
Fertility	171	69			
Carbon	15	88			
Calving	33	98			
Beef	-3	95			
Maintenance	6	85			
Management	-1	66			
Health	-8	79			

Daughter Proven, ICBF Nov 2024

PRODUCTION

Milk (kg)	-73		
Fat (kg)	11		
Protein (kg)	8	% Rel	97
Fat %	0.25		
Protein %	0.19		

FERTILITY

Calving Int (Days)	-9.4	% Rel	67
Survival %	4.2	% Rel	75

MANAGEMENT

Temperament	-0.09	Average
Milking Time	-6.6	Average

CALVING

Dairy Heifer Calving Diff	6.7	% Rel	96
Dairy Cow Calving Diff	2.7	% Rel	98
Gest. Length (Days)	-2.6	% Rel	99
Calf Mort	-0.5	% Rel	99

BEEF

Carcass Wt	-5	kg
Carcass Conf	-0.6	

HEALTH

Lameness %	0.03	Below Avg
SCC	0.02	Average
Mastitis %	-0.01	Average
TB %	9.47	Below Avg
Liver Fluke %	32.3	Good



(IG) HILLTOWN FABLE SRM

IRL Code: FR6844

AI Code: HO6938



Dam of (IG) Hilltown Fable

HB No 372222890442692 **Sire** (IG) MONABROGUE EBONY
DOB 20/01/2020
Breed HO (81%),FR (19%) **Dam** HILLTOWN FABIOLA 2272
Beta A2/A2 **MG Sire** IE161555071803
Kappa BB
Colour **Bred by** Geoffrey Mc Clay, Donegal,
System 2 Donegal

DAM YIELDS	Milk Kgs	Fat Kgs	Ptn		BFat		Calv Int
			Kgs	F&P Kgs	%	Ptn %	
4 Lact	7675	333	297	630	4.34	3.87	314
Average	6570	277	246	523	4.21	3.74	367
Life (5 Lct)	33450	1422	1246	2668	4.25	3.72	

EBI & SUB-INDEXES

Index	€	Rel%	0	50	100
EBI	296	86			
Milk	110	97			
Fertility	121	66			
Carbon	7	88			
Calving	67	98			
Beef	-35	95			
Maintenance	15	89			
Management	5	66			
Health	6	80			

Daughter Proven, ICBF Nov 2024

PRODUCTION

Milk (kg)	18		
Fat (kg)	15		
Protein (kg)	14	% Rel	97
Fat %	0.25		
Protein %	0.23		

FERTILITY

Calving Int (Days)	-7.9	% Rel	64
Survival %	1.7	% Rel	70

MANAGEMENT

Temperament	0.14	Average	
Milking Time	0.3	Average	

CALVING

Dairy Heifer	6.1	% Rel	99
Calving Diff			
Dairy Cow	2.4	% Rel	99
Calving Diff			
Gest. Length (Days)	-6.6	% Rel	99
Calf Mort	-0.1	% Rel	99

BEEF

Carcass Wt	-9	kg	
Carcass Conf	-0.8		

HEALTH

Lameness %	0.0	Average	
SCC	-0.02	Average	
Mastitis %	-0.04	Good	
TB %	7.33	Good	
Liver Fluke %	32.1	Good	



(IG) STAMULLEN ZAKERY SRM

IRL Code: FR7926

AI Code: HO7396



Dam of Sire - (IG) Highmount Stark

HB No 372224757423457 **Sire** (IG) HIGHMOUNT STARK
DOB 13/02/2021
Breed HO (75%),FR (25%) **Dam** STAMULLEN REBECCA B 1942
Beta A2/A2 **MG Sire** HSS VHA LOCHINVAR-ET S3F
Kappa AB
Colour **Bred by** Brendan Meade, Stamullen,
System 2 Meath

DAM YIELDS	Milk Kgs	Fat Kgs	Ptn		BFat		Calv Int
			Kgs	F&P Kgs	%	Ptn %	
9 Lact	7061	368	288	656	5.21	4.07	366
Average	6200	324	258	582	5.22	4.15	363
Life (9 Lct)	55801	2912	2322	5234	5.22	4.16	

EBI & SUB-INDEXES

Index	€	Rel%	0	50	100
EBI	305	70			
Milk	91	83			
Fertility	143	44			
Carbon	14	69			
Calving	49	97			
Beef	-16	75			
Maintenance	19	53			
Management	1	60			
Health	4	77			

Genomic, ICBF Nov 2024

PRODUCTION

Milk (kg)	-31		
Fat (kg)	15		
Protein (kg)	10	% Rel	83
Fat %	0.29		
Protein %	0.19		

FERTILITY

Calving Int (Days)	-7.9	% Rel	46
Survival %	3.5	% Rel	40

MANAGEMENT

Temperament	0.03	Average	
Milking Time	1.4	Average	

CALVING

Dairy Heifer	6.3	% Rel	97
Calving Diff			
Dairy Cow	2.6	% Rel	98
Calving Diff			
Gest. Length (Days)	-4.1	% Rel	99
Calf Mort	-0.4	% Rel	99

BEEF

Carcass Wt	-8	kg	
Carcass Conf	-0.4		

HEALTH

Lameness %	-0.03	Good	
SCC	-0.01	Average	
Mastitis %	-0.04	Good	
TB %	8.24	Average	
Liver Fluke %	32.4	Average	



(IG) STAMULLEN LUNASA SRM

IRL Code: FR6547

AI Code: HO6940



Dam of (IG) Stamullen Lunasa

HB No 372224757453369 **Sire** (IG) CORBALLIS EARLY SRM
DOB 10/03/2020
Breed HO (69%),FR (31%) **Dam** STAMULLEN DOIREANN B 2123
Beta A1/A2 **MG Sire** (IG) LAURAGH EVERT
Kappa AB
Colour **Bred by** Brendan Meade, Stamullen,
System 2 Meath

	Milk Kgs	Fat Kgs	Ptn Kgs	F&P Kgs	BFat %	Ptn %	Calv Int
9 Lact	6615	304	247	551	4.6	3.73	375
Average	7266	335	285	620	4.61	3.9	365
Life (10 Lct)	72660	3345	2846	6191	4.6	3.92	

EBI & SUB-INDEXES

Index	€	Rel%	0	50	100
EBI	306	85			
Milk	70	97			
Fertility	144	65			
Carbon	20	87			
Calving	47	98			
Beef	0	95			
Maintenance	18	89			
Management	-1	66			
Health	8	77			

PRODUCTION

Milk (kg)	-94		
Fat (kg)	9		
Protein (kg)	7	% Rel	97
Fat %	0.23		
Protein %	0.18		

FERTILITY

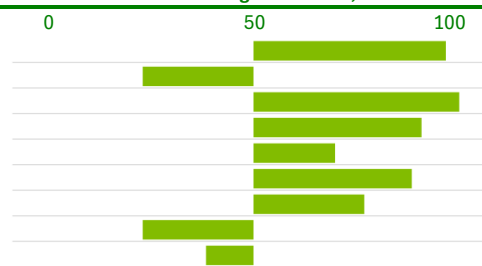
Calving Int (Days)	-8.7	% Rel	63
Survival %	2.8	% Rel	70

MANAGEMENT

Temperament	-0.06	Average
Milking Time	-4.6	Average



Daughter Proven, ICBF Nov 2024



CALVING

Dairy Heifer Calving Diff	8.2	% Rel	99
Dairy Cow Calving Diff	3.0	% Rel	99
Gest. Length (Days)	-5.2	% Rel	99
Calf Mort	0.2	% Rel	99

BEEF

Carcass Wt	-5	kg
Carcass Conf	-0.2	

HEALTH

Lameness %	-0.04	Good
SCC	-0.06	Average
Mastitis %	-0.04	Good
TB %	8.11	Average
Liver Fluke %	31.9	Good

(IG) BAURAVILLA PISTOL SRM

IRL Code: FR7047

AI Code: HO6933



Dam of (IG) Bauravilla Pistol

HB No 372225064061682 **Sire** (IG) KILFEACLE PIVOTAL
DOB 25/02/2020
Breed HO (75%),FR (16%),JE (6%),UN (3%) **Dam** BAURAVILLA BETTY 1108
Beta A1/A2 **MG Sire** DOONMAGH DSU BOWSER
Kappa BB
Colour Red **Bred by** Mark Kingston, Skibbereen,
System 2 Cork

	Milk Kgs	Fat Kgs	Ptn Kgs	F&P Kgs	BFat %	Ptn %	Calv Int
6 Lact	6122	263	252	515	4.3	4.12	380
Average	5124	234	209	443	4.57	4.07	364
Life (7 Lct)	35867	1639	1464	3103	4.57	4.08	

EBI & SUB-INDEXES

Index	€	Rel%	0	50	100
EBI	320	88			
Milk	104	98			
Fertility	154	73			
Carbon	10	91			
Calving	40	99			
Beef	0	97			
Maintenance	7	92			
Management	2	66			
Health	3	80			

PRODUCTION

Milk (kg)	6		
Fat (kg)	19		
Protein (kg)	11	% Rel	98
Fat %	0.33		
Protein %	0.19		

FERTILITY

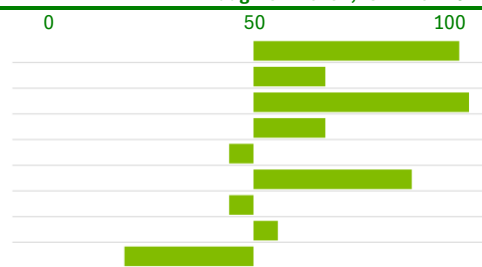
Calving Int (Days)	-9.2	% Rel	71
Survival %	3.0	% Rel	78

MANAGEMENT

Temperament	0.0	Average
Milking Time	-6.0	Average



Daughter Proven, ICBF Nov 2024



CALVING

Dairy Heifer Calving Diff	6.6	% Rel	99
Dairy Cow Calving Diff	2.7	% Rel	99
Gest. Length (Days)	-3.3	% Rel	99
Calf Mort	-0.4	% Rel	99

BEEF

Carcass Wt	-6	kg
Carcass Conf	-0.2	

HEALTH

Lameness %	0.0	Average
SCC	-0.04	Average
Mastitis %	-0.02	Good
TB %	7.97	Average
Liver Fluke %	32.0	Good

(IG) BALLYDUNNE REDSIMBA SRM

IRL Code: FR8811

AI Code: HO7821



Dam of (IG) Ballydunne Redsimba SRM

HB No	372223733771035	Sire	(IG)BALLINROE XAAR
DOB	21/01/2022		
Breed	HO (69%),FR (31%)	Dam	BALLYDUNNE FR4338 NANCY 0744
Beta	A2/A2	MG Sire	(IG) CRAIGTOWN TORNADO
Kappa	AA		
Colour	Red	Bred by	Shane Patrick Murphy, Rathmoyle, Kilkenny
System	2		

	Milk Kgs	Fat Kgs	Ptn Kgs	F&P Kgs	BFat %	Ptn %	Calv Int
DAM YIELDS							
3 Lact	7003	343	290	633	4.89	4.14	376
Average	6251	292	259	551	4.68	4.15	365
Life (4 Lct)	25510	1176	1038	2214	4.61	4.07	

EBI & SUB-INDEXES

Index	€	Rel%	0	50	100
EBI	327	65			
Milk	97	81			
Fertility	150	40			
Carbon	12	62			
Calving	59	92			
Beef	-19	53			
Maintenance	14	45			
Management	5	58			
Health	10	74			

Genomic, ICBF Nov 2024

PRODUCTION

Milk (kg)	83		
Fat (kg)	17		
Protein (kg)	12	% Rel	81
Fat %	0.24		
Protein %	0.15		

FERTILITY

Calving Int (Days)	-8.9	% Rel	41
Survival %	3.1	% Rel	37

MANAGEMENT

Temperament	-0.07	Average
Milking Time	-23.8	Fast

CALVING

Dairy Heifer Calving Diff	4.6	% Rel	79
Dairy Cow Calving Diff	2.1	% Rel	93
Gest. Length (Days)	-5.6	% Rel	97
Calf Mort	0.3	% Rel	97

BEEF

Carcass Wt	-10	kg
Carcass Conf	-0.4	

HEALTH

Lameness %	-0.04	Good
SCC	-0.06	Average
Mastitis %	-0.02	Good
TB %	6.86	Good
Liver Fluke %	32.5	Average



(IG) TINNAKILL GRANDSLAM PED

IRL Code: FR9016

AI Code: HO8118



Dam of (IG) Tinnakill Grandslam

HB No	372216059772354	Sire	(IG) HIGHMOUNT STARK
DOB	01/02/2022		
Breed	HO (75%),FR (25%)	Dam	TINNAKILL FR4481 ZANDRA 1860
Beta	A2/A2	MG Sire	(IG) MONABROGUE EBONY
Kappa	AB		
Colour		Bred by	Thomas G Fennelly, Portarlington, Laois
System	2		

	Milk Kgs	Fat Kgs	Ptn Kgs	F&P Kgs	BFat %	Ptn %	Calv Int
DAM YIELDS							
1 Lact	4752	202	191	393	4.25	4.01	352
Average	4752	202	191	393	4.25	4.01	367
Life (2 Lct)	10677	456	416	872	4.27	3.9	

EBI & SUB-INDEXES

Index	€	Rel%	0	50	100
EBI	339	66			
Milk	121	81			
Fertility	126	42			
Carbon	12	64			
Calving	61	93			
Beef	-12	55			
Maintenance	21	51			
Management	-1	60			
Health	11	76			

Genomic, ICBF Nov 2024

PRODUCTION

Milk (kg)	49		
Fat (kg)	18		
Protein (kg)	15	% Rel	81
Fat %	0.28		
Protein %	0.23		

FERTILITY

Calving Int (Days)	-7.3	% Rel	44
Survival %	2.8	% Rel	38

MANAGEMENT

Temperament	-0.06	Average
Milking Time	-4.5	Average

CALVING

Dairy Heifer Calving Diff	5.1	% Rel	82
Dairy Cow Calving Diff	2.3	% Rel	94
Gest. Length (Days)	-5.6	% Rel	98
Calf Mort	-0.7	% Rel	98

BEEF

Carcass Wt	-8	kg
Carcass Conf	-0.5	

HEALTH

Lameness %	0.03	Below Avg
SCC	-0.12	Good
Mastitis %	-0.07	Good
TB %	7.08	Good
Liver Fluke %	33.1	Below Avg



(IG) BARNLAND FLATELY SRM

IRL Code: FR9361

AI Code: HO7820



Dam of (IG) Barnland Flately SRM

HB No 372213720721451 **Sire** (IG) HIGHMOUNT STARK
DOB 12/02/2022
Breed HO (72%),FR (28%) **Dam** LONGLEA BGI GERTIE
Beta A2/A2 **MG Sire** BAGWORTH PF GRANDEUR S1F
Kappa AA
Colour **Bred by** Patrick Fortune, Gorey, Wexford
System 2&3

DAM YIELDS	Milk Kgs	Fat Kgs	Ptn Kgs	F&P Kgs	BFat %	Ptn %	Calv Int
6 Lact	7634	328	266	594	4.29	3.49	354
Average	6878	310	255	565	4.52	3.72	360
Life (6 Lct)	41267	1861	1530	3391	4.51	3.71	

EBI & SUB-INDEXES

Index	€	Rel%	0	50	100
EBI	304	67			
Milk	96	83			
Fertility	134	44			
Carbon	8	64			
Calving	47	90			
Beef	-25	54			
Maintenance	18	47			
Management	3	61			
Health	22	76			

Genomic, ICBF Nov 2024

PRODUCTION

Milk (kg)	111		
Fat (kg)	19		
Protein (kg)	11	% Rel	83
Fat %	0.25		
Protein %	0.13		

FERTILITY

Calving Int (Days)	-6.4	% Rel	46
Survival %	4.3	% Rel	39

MANAGEMENT

Temperament	-0.01	Average
Milking Time	-11.9	Fast



CALVING

Dairy Heifer Calving Diff	5.5	% Rel	70
Dairy Cow Calving Diff	2.4	% Rel	91
Gest. Length (Days)	-3.7	% Rel	96
Calf Mort	-0.6	% Rel	96

BEEF

Carcass Wt	-10	kg
Carcass Conf	-0.6	

HEALTH

Lameness %	-0.03	Good
SCC	-0.11	Good
Mastitis %	-0.1	Good
TB %	5.77	Good
Liver Fluke %	31.5	Good

(ABS) CHERRYHILL HAMILTON PED

IRL Code:

AI Code: HO7243



(ABS) Cherryhill Hamilton

HB No 372218169142617 **Sire** (IG) BALLYGOWN ALBERT / FR4513
DOB 19/02/2021
Breed HO (71.88%), FR (28.13%) **Dam** CHERRYHILL LWR RUDY 1777 / IE221372331777
Beta A2/A2 **MG Sire** (IG) LONGVIEW RELIABLE / LWR BB
Kappa BB
Colour **Bred by** Donald Thomas Scully, Portlaoise, Laois
System 3

DAM YIELDS	Milk Kgs	Fat Kgs	Ptn Kgs	F&P Kgs	BFat %	Ptn %	Calv Int
3 Lact	9504	393	346	739	4.13	3.64	348
Average	7174	282	257	538	3.91	3.58	356
Life (4 Lct)	28697	1126	1026	2152	3.92	3.58	

EBI & SUB-INDEXES

Index	€	Rel%	0	50	100
EBI	246	64			
Milk	102	82			
Fertility	105	46			
Carbon	4	62			
Calving	52	61			
Beef	-23	51			
Maintenance	13	50			
Management	5	60			
Health	-12	78			

Genomic, ICBF Nov 2024

PRODUCTION

Milk (kg)	125		
Fat (kg)	12		
Protein (kg)	15	% Rel	
Fat %	0.12		
Protein %	0.18		

FERTILITY

Calving Int (Days)	-6.0	% Rel	48
Survival %	2.4	% Rel	42

MANAGEMENT

Temperament	0.01	Average
Milking Time	-15.1	Fast



CALVING

Dairy Heifer Calving Diff	6.4	% Rel	65
Dairy Cow Calving Diff	2.2	% Rel	67
Gest. Length (Days)	-5.2	% Rel	61
Calf Mort	-0.6	% Rel	61

BEEF

Carcass Wt	-8	kg
Carcass Conf	-0.7	

HEALTH

Lameness %	0.03	Below Avg
SCC	-0.01	Average
Mastitis %	0.01	Average
TB %	10.53	Below Avg
Liver Fluke %	32.8	Below Avg

(IG) KILFEACLE PIVOTAL PED

IRL Code: FR4728

AI Code: HO6538



Dam of (IG) Kilfeacle Pivotal

HB No	372219765491921	Sire	(IG) LONGVIEW RELIABLE
DOB	23/01/2018		
Breed	HO (81%),FR (16%),UN (3%)	Dam	KILFEACLE OLIVE 1589
Beta	A2/A2	MG Sire	(IG) LAURAGH EVERT
Kappa	AB		
Colour		Bred by	Michael Marnane, Kilfeacle, Tipperary
System	3		

	Milk Kgs	Fat Kgs	Ptn Kgs	F&P Kgs	BFat %	Ptn %	Calv Int
6 Lact	9346	364	328	692	3.89	3.51	377
Average	8875	345	316	661	3.995	3.54	368
Life (7 Lct)	62123	2416	2210	4626	3.89	3.56	

EBI & SUB-INDEXES

Index	€	Rel%	0	50	100
EBI	271	96			
Milk	124	99			
Fertility	98	94			
Carbon	-7	98			
Calving	54	99			
Beef	-3	99			
Maintenance	4	99			
Management	5	72			
Health	-3	97			

Daughter Proven, ICBF Nov 2024

PRODUCTION

Milk (kg)	222		
Fat (kg)	22		
Protein (kg)	17	% Rel	99
Fat %	0.22		
Protein %	0.16		

FERTILITY

Calving Int (Days)	-5.7	% Rel	95
Survival %	2.1	% Rel	92

MANAGEMENT

Temperament	0.03	Average
Milking Time	-11.8	Fast

CALVING

Dairy Heifer Calving Diff	5.7	% Rel	99
Dairy Cow Calving Diff	2.3	% Rel	99
Gest. Length (Days)	-4.7	% Rel	99
Calf Mort	-0.2	% Rel	99

BEEF

Carcass Wt	-3	kg
Carcass Conf	-0.4	

HEALTH

Lameness %	0.01	Average
SCC	-0.15	Good
Mastitis %	-0.02	Good
TB %	10.93	Below Avg
Liver Fluke %	32.6	Average



(IG) MALLARDSTOWN ROOSTER PED

IRL Code: FR8139

AI Code: HO7395



Dam of (IG) Mallardstown Rooster

HB No	372214909861906	Sire	(IG) DOONMAGH SEVILLE
DOB	06/02/2021		
Breed	HO (75%),FR (22%),UN (3%)	Dam	MILEWATER ASH ROSETTA 2
Beta	A2/A2	MG Sire	KILQUANE ASHER
Kappa	AB		
Colour	Red	Bred by	Liam Hennessy, Kells, Kilkenny
System	3		

	Milk Kgs	Fat Kgs	Ptn Kgs	F&P Kgs	BFat %	Ptn %	Calv Int
6 Lact	7560	357	281	638	4.72	3.71	352
Average	6936	312	264	576	4.5	3.78	361
Life (7 Lct)	41615	1872	1584	3456	4.5	3.81	

EBI & SUB-INDEXES

Index	€	Rel%	0	50	100
EBI	272	69			
Milk	92	82			
Fertility	118	44			
Carbon	7	66			
Calving	54	97			
Beef	-10	67			
Maintenance	9	50			
Management	2	59			
Health	1	76			

Genomic, ICBF Nov 2024

PRODUCTION

Milk (kg)	61		
Fat (kg)	13		
Protein (kg)	12	% Rel	82
Fat %	0.18		
Protein %	0.17		

FERTILITY

Calving Int (Days)	-7.1	% Rel	46
Survival %	2.3	% Rel	38

MANAGEMENT

Temperament	0.02	Average
Milking Time	-3.9	Average

CALVING

Dairy Heifer Calving Diff	5.6	% Rel	92
Dairy Cow Calving Diff	2.5	% Rel	98
Gest. Length (Days)	-5.2	% Rel	99
Calf Mort	-0.6	% Rel	99

BEEF

Carcass Wt	-5	kg
Carcass Conf	-0.8	

HEALTH

Lameness %	0.0	Average
SCC	-0.03	Average
Mastitis %	-0.02	Good
TB %	8.39	Average
Liver Fluke %	31.9	Good



(ABS) CHERRYHILL EDMOND PED

IRL Code: FR7992

AI Code: HO6649



(ABS) Cheeryhill Edmond

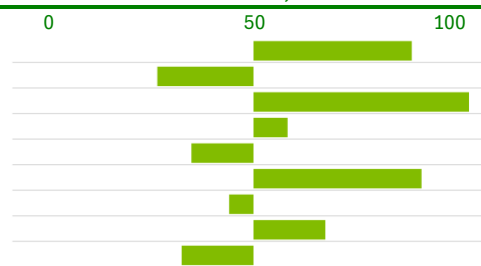
HB No	372218169172322	Sire	BALLYCAMPION LAURENCE
DOB	05/02/2020		
Breed	HO (72%),FR (25%),MY (3%)	Dam	CHERRYHILL SOK ANN
Beta	A1/A1	MG Sire	(IG) SUNNYBANK OMAN
Kappa	AA		
Colour		Bred by	Donald Thomas Scully, Portlaoise, Laois
System	3		

	Milk Kgs	Fat Kgs	Ptn Kgs	F&P Kgs	BFat %	Ptn %	Calv Int
9 Lact	6421	273	226	499	4.24	3.52	417
Average	7148	304	254	558	4.26	3.55	374
Life (9 Lct)	64331	2736	2286	5022	4.25	3.55	

EBI & SUB-INDEXES

Index	€	Rel%	0	50	100
EBI	284	68			
Milk	72	82			
Fertility	150	45			
Carbon	6	66			
Calving	37	91			
Beef	1	64			
Maintenance	7	51			
Management	3	62			
Health	7	75			

Genomic, ICBF Nov 2024



PRODUCTION

Milk (kg)	74		
Fat (kg)	11		
Protein (kg)	9	% Rel	82
Fat %	0.14		
Protein %	0.12		

FERTILITY

Calving Int (Days)	-8.5	% Rel	47
Survival %	3.5	% Rel	41

MANAGEMENT

Temperament	0.05	Average
Milking Time	-5.0	Average



CALVING

Dairy Heifer Calving Diff	5.7	% Rel	89
Dairy Cow Calving Diff	2.2	% Rel	89
Gest. Length (Days)	-3.1	% Rel	97
Calf Mort	-0.1	% Rel	97

BEEF

Carcass Wt	-2	kg
Carcass Conf	-0.3	

HEALTH

Lameness %	-0.06	Good
SCC	-0.04	Average
Mastitis %	-0.04	Good
TB %	8.48	Average
Liver Fluke %	31.9	Good

(IG) KILFEACLE DANZIG PED

IRL Code: FR6649

AI Code: HO6804



Dam of (IG) Kilfeacle Danzig

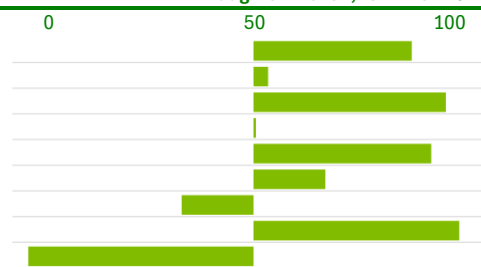
HB No	372219765412152	Sire	(IG) KILFEACLE PIVOTAL
DOB	28/01/2020		
Breed	HO (84%),FR (13%),UN (3%)	Dam	KILFEACLE LILA 1272
Beta	A2/A2	MG Sire	KEVINSFORT OJI HAZE
Kappa	AB		
Colour		Bred by	Michael Marnane, Kilfeacle, Tipperary
System	3		

	Milk Kgs	Fat Kgs	Ptn Kgs	F&P Kgs	BFat %	Ptn %	Calv Int
10 Lact	5393	219	192	411	4.06	3.57	371
Average	6612	265	235	500	4.01	3.54	366
Life (11 Lct)	72728	2912	2581	5493	4	3.55	

EBI & SUB-INDEXES

Index	€	Rel%	0	50	100
EBI	285	86			
Milk	95	97			
Fertility	138	69			
Carbon	3	87			
Calving	56	98			
Beef	-10	95			
Maintenance	3	83			
Management	8	67			
Health	-8	82			

Daughter Proven, ICBF Nov 2024



PRODUCTION

Milk (kg)	182		
Fat (kg)	12		
Protein (kg)	15	% Rel	97
Fat %	0.09		
Protein %	0.14		

FERTILITY

Calving Int (Days)	-9.6	% Rel	67
Survival %	1.3	% Rel	74

MANAGEMENT

Temperament	0.09	Average
Milking Time	-16.6	Fast



CALVING

Dairy Heifer Calving Diff	5.3	% Rel	95
Dairy Cow Calving Diff	2.5	% Rel	98
Gest. Length (Days)	-5.3	% Rel	99
Calf Mort	-0.4	% Rel	99

BEEF

Carcass Wt	-5	kg
Carcass Conf	-0.6	

HEALTH

Lameness %	0.04	Below Avg
SCC	-0.04	Average
Mastitis %	0.04	Below Ave
TB %	8.79	Average
Liver Fluke %	32.1	Good

(IG) KILBALLY SUGARHILL SRM

IRL Code: FR6778

AI Code: HO6806



Daughter of P.G.Grandsire - (IG) Lauragh Evert

HB No 372215840041710 **Sire** (IG) KILFEACLE PIVOTAL
DOB 04/02/2020
Breed HO (75%),FR (22%),UN (3%) **Dam** KILBALLY KOZ GEENA
Beta A1/A2 **MG Sire** KEVINSFORT OJI HAZE
Kappa AB
Colour **Bred by** Thomas Baldwin, Tallow,
System 3 Waterford

DAM YIELDS	Milk Kgs	Fat Kgs	Ptn		Bfat		Calv Int
			Kgs	F&P Kgs	%	Ptn %	
6 Lact	7732	344	282	626	4.45	3.64	369
Average	8948	386	320	706	4.37	3.58	415
Life (9 Lct)	80528	3478	2878	6356	4.32	3.57	

EBI & SUB-INDEXES

Index	€	Rel%	0	50	100
EBI	297	86			
Milk	112	97			
Fertility	129	69			
Carbon	-2	87			
Calving	55	97			
Beef	-7	94			
Maintenance	4	80			
Management	0	67			
Health	7	81			

Daughter Proven, ICBF Nov 2024

PRODUCTION

Milk (kg)	143		
Fat (kg)	23		
Protein (kg)	13	% Rel	97
Fat %	0.29		
Protein %	0.14		

FERTILITY

Calving Int (Days)	-7.8	% Rel	67
Survival %	2.5	% Rel	73

MANAGEMENT

Temperament	-0.1	Below Ave
Milking Time	-12.1	Fast

CALVING

Dairy Heifer Calving Diff	5.5	% Rel	96
Dairy Cow Calving Diff	2.3	% Rel	98
Gest. Length (Days)	-5.1	% Rel	99
Calf Mort	0.2	% Rel	99

BEEF

Carcass Wt	-4	kg
Carcass Conf	-0.4	

HEALTH

Lameness %	-0.04	Good
SCC	-0.07	Average
Mastitis %	0.01	Average
TB %	7.35	Good
Liver Fluke %	31.6	Good



(IG) GARRYNAGREE NEILLY SRM

IRL Code: FR7356

AI Code: HO7393



Dam of M.Grandsire - (IG) Ballinaborta Primo

HB No 372215584221346 **Sire** COOLNASOON DIAMOND NUA
DOB 24/02/2020 **SRM**
Breed HO (63%),FR (31%),MY (6%) **Dam** GARRYNAGREE LUCY 907
Beta A1/A1 **MG Sire** (IG) BALLINABORTA PRIMO
Kappa AB
Colour **Bred by** James Flavin, Dungarvan,
System 3 Waterford

DAM YIELDS	Milk Kgs	Fat Kgs	Ptn		Bfat		Calv Int
			Kgs	F&P Kgs	%	Ptn %	
5 Lact	4839	240	187	427	4.96	3.87	399
Average	5141	244	189	433	4.74	3.68	372
Life (5 Lct)	25705	1220	947	2167	4.75	3.68	

EBI & SUB-INDEXES

Index	€	Rel%	0	50	100
EBI	305	78			
Milk	107	92			
Fertility	140	55			
Carbon	6	77			
Calving	37	97			
Beef	-8	87			
Maintenance	10	55			
Management	2	64			
Health	10	79			

Daughter Proven, ICBF Nov 2024

PRODUCTION

Milk (kg)	63		
Fat (kg)	14		
Protein (kg)	14	% Rel	92
Fat %	0.21		
Protein %	0.21		

FERTILITY

Calving Int (Days)	-7.4	% Rel	56
Survival %	3.8	% Rel	54

MANAGEMENT

Temperament	-0.13	Below Ave
Milking Time	-22.4	Fast

CALVING

Dairy Heifer Calving Diff	6.8	% Rel	93
Dairy Cow Calving Diff	2.6	% Rel	98
Gest. Length (Days)	-2.8	% Rel	99
Calf Mort	-0.8	% Rel	99

BEEF

Carcass Wt	-6	kg
Carcass Conf	-0.4	

HEALTH

Lameness %	-0.05	Good
SCC	-0.12	Good
Mastitis %	-0.04	Good
TB %	8.37	Average
Liver Fluke %	33.0	Below Avg



(ABS) CHERRYHILL SCHUMACHER PED

IRL Code:

AI Code: HO7243



(ABS) Cherryhill Schumacher

HB No	372218169122631	Sire	(IG) KILFEACLE PIVOTAL / FR4728
DOB	23/02/2021		
Breed	HO(78.13%), FR(18.75%), UN(3.13%)	Dam	CHERRYHILL FR2394 ADELE 1885 / 372218169171885
Beta	A2/A2	MG Sire	(IG) COOLKERRY GREENHILLS MATT / FR2394
Kappa	BB		
Colour		Bred by	Donald Thomas Scully, Portlaoise, Laois
System	3		

DAM YIELDS	Milk Kgs	Fat Kgs	Ptn Kgs	F&P Kgs	BFat %	Ptn %	Calv Int
4 Lact	6571	317	240	557	4.82	3.66	373
Average	7001	300	255	557	4.55	3.66	375
Life (6 Lct)	42004	1799	1527	3326	4.28	3.64	

EBI & SUB-INDEXES

Index	€	Rel%	0	50	100
EBI	308	64			
Milk	114	82			
Fertility	155	46			
Carbon	6	62			
Calving	34	61			
Beef	-1	50			
Maintenance	7	49			
Management	-7	59			
Health	0	76			

Genomic, ICBF Nov 2024

PRODUCTION

Milk (kg)	45	
Fat (kg)	19	
Protein (kg)	14	% Rel
Fat %	0.29	
Protein %	0.21	

FERTILITY

Calving Int (Days)	-8.4	% Rel	48
Survival %	3.9	% Rel	41

MANAGEMENT

Temperament	-0.2	Below Ave
Milking Time	-1.4	Average

CALVING

Dairy Heifer Calving Diff	2.8	% Rel	67
Dairy Cow Calving Diff	7.4	% Rel	63
Gest. Length (Days)	-3.4	% Rel	61
Calf Mort	-0.3	% Rel	61

BEEF

Carcass Wt	-5	kg
Carcass Conf	-0.5	

HEALTH

Lameness %	0.03	Below Avg
SCC	-0.03	Average
Mastitis %	-0.02	Good
TB %	8.19	Average
Liver Fluke %	32.1	Good



(IG) DUNGRANGE DAN PED

IRL Code: FR9316

AI Code: HO8119



Daughters of Grand sire of FR9316 - Westcoast Perseus

HB No	372224346475963	Sire	(IG) BALLYCARNEY DENMAN
DOB	15/02/2022		
Breed	HO (91%),FR (9%),	Dam	DUNGRANGE PERSEUS BRONA
Beta	A2/A2	MG Sire	WESTCOAST PERSEUS
Kappa	AB		
Colour	Black	Bred by	Donal Dunne, Navan, Meath
System	3		

DAM YIELDS	Milk Kgs	Fat Kgs	Ptn Kgs	F&P Kgs	BFat %	Ptn %	Calv Int
2 Lact	8186	342	300	642	4.17	3.67	328
Average	6592	280	227	507	4.26	3.43	367
Life (4 Lct)	26369	1120	908	2028	4.25	3.44	

EBI & SUB-INDEXES

Index	€	Rel%	0	50	100
EBI	313	67			
Milk	121	82			
Fertility	130	45			
Carbon	-1	64			
Calving	53	91			
Beef	-17	52			
Maintenance	7	49			
Management	4	60			
Health	17	75			

Genomic, ICBF Nov 2024

PRODUCTION

Milk (kg)	211	
Fat (kg)	26	
Protein (kg)	15	% Rel 82
Fat %	0.29	
Protein %	0.13	

FERTILITY

Calving Int (Days)	-7.2	% Rel	48
Survival %	3.2	% Rel	38

MANAGEMENT

Temperament	-0.04	Average
Milking Time	-17.4	Fast

CALVING

Dairy Heifer Calving Diff	4.1	% Rel	76
Dairy Cow Calving Diff	2.1	% Rel	93
Gest. Length (Days)	-4.2	% Rel	97
Calf Mort	0.3	% Rel	97

BEEF

Carcass Wt	-7	kg
Carcass Conf	-0.9	

HEALTH

Lameness %	-0.03	Good
SCC	-0.17	Good
Mastitis %	-0.07	Good
TB %	7.33	Good
Liver Fluke %	32.2	Good



(IG) TANKARDSROCK TEAK PED

IRL Code: FR7929

AI Code: HO7522



Dam of (IG) Tankardsrock Teak

HB No 372218058631394 **Sire** (IG) BALLINTOSIG RING O
DOB 04/10/2020
Breed HO (94%),FR (6%) **Dam** TANKARDSROCK LHZ TWINKLE
Beta A1/A2 **MG Sire** (IG) LAURAGH EVERT
Kappa AB
Colour Black **Bred by** Stephen McShane, Dundalk,
System 3 Louth

	Milk Kgs	Fat Kgs	Ptn Kgs	F&P Kgs	BFat %	Ptn %	Calv Int
7 Lact	5143	258	214	472	5.01	4.17	353
Average	7565	366	299	665	4.86	3.96	364
Life (8 Lct)	60516	2932	2392	5324	4.84	3.95	

EBI & SUB-INDEXES

Index	€	Rel%	0	50	100
EBI	345	72			
Milk	107	83			
Fertility	150	47			
Carbon	1	70			
Calving	48	98			
Beef	-10	78			
Maintenance	9	53			
Management	4	65			
Health	36	79			

Genomic, ICBF Nov 2024

PRODUCTION

Milk (kg)	197		
Fat (kg)	20		
Protein (kg)	14	% Rel	83
Fat %	0.21		
Protein %	0.12		

FERTILITY

Calving Int (Days)	-8.8	% Rel	49
Survival %	3.2	% Rel	42

MANAGEMENT

Temperament	0.01	Average
Milking Time	-13.3	Fast

CALVING

Dairy Heifer Calving Diff	6.7	% Rel	99
Dairy Cow Calving Diff	2.6	% Rel	99
Gest. Length (Days)	-4.1	% Rel	99
Calf Mort	-0.6	% Rel	99

BEEF

Carcass Wt	-3	kg
Carcass Conf	-0.8	

HEALTH

Lameness %	-0.1	Good
SCC	-0.15	Good
Mastitis %	-0.06	Good
TB %	2.91	Good
Liver Fluke %	33.0	Below Avg



(IG) KILLAVALLA LINESMAN PED

IRL Code: FR1185

AI Code: HO8117



Dam of Sire - (IG) Craigtown Oberon

HB No 372223027586613 **Sire** (IG)CRAIGTOWN OBERON / FR7293
DOB 05/02/2023
Breed HO (75%),FR (25%) **Dam** KILLAVALLA LILY 19/372223027544027
Beta A1/A2 **MG Sire** (IG) OLCASLETOWN RONALDO / FR2298
Kappa AB
Colour Black & White **Bred by** Michael Ryan, Nenagh,
System 3 Tipperary

	Milk Kgs	Fat Kgs	Ptn Kgs	F&P Kgs	BFat %	Ptn %	Calv Int
1 Lact	5034	249	196	445	4.94	3.88	356
Average	6269	302	241	543	4.84	3.83	392
Life (4 Lct)	20032	963	778	1741	4.81	3.88	

EBI & SUB-INDEXES

Index	€	Rel%	0	50	100
EBI	347	59			
Milk	137	79			
Fertility	144	37			
Carbon	1	57			
Calving	46	60			
Beef	-8	48			
Maintenance	5	40			
Management	5	58			
Health	17	74			

Genomic, ICBF Nov 2024

PRODUCTION

Milk (kg)	111		
Fat (kg)	23		
Protein (kg)	17	% Rel	79
Fat %	0.33		
Protein %	0.22		

FERTILITY

Calving Int (Days)	-8.0	% Rel	39
Survival %	3.4	% Rel	32

MANAGEMENT

Temperament	0.02	Average
Milking Time	-15.2	Fast

CALVING

Dairy Heifer Calving Diff	6.9	% Rel	63
Dairy Cow Calving Diff	2.7	% Rel	67
Gest. Length (Days)	-4.3	% Rel	61
Calf Mort	-0.4	% Rel	61

BEEF

Carcass Wt	-7	kg
Carcass Conf	-0.4	

HEALTH

Lameness %	-0.03	Good
SCC	-0.1	Good
Mastitis %	-0.03	Good
TB %	5.59	Good
Liver Fluke %	32.5	Average



